



Bath Road, Hounslow, TW3 3BN

£390,000

Situated in the Heart of Hounslow with easy access to Hounslow Town Centre, Hounslow Central tube station bus routes and schools is this two bedroom semi-detached cottage. The accommodation comprises on the ground floor through lounge/diner kitchen and bathroom, on the first floor two bedrooms. Outside a front and rear garden. The property also benefits from double glazed windows and central heating.

A partner of
The Guild Of Professional Estate Agents
with a network of over 700 independent estate agents

Associated Office: 121 Park Lane, Mayfair, London W1K 7AG t 020 7318 7075

Through Lounge/Diner



Front aspect double glazed window, two radiators, laminate flooring, stairs to first floor landing, through to...



Kitchen



Single drainer stainless steel sink unit with mixer tap and cupboard below, further wall mounted units, space for cooker, space for washing machine and fridge/freezer, double glazed window, wall mounted "Vaillant" boiler, skylights, door to rear garden.



Inner Hallway
Radiator, door to...

Bathroom



White suite comprising panel enclosed bath, pedestal wash hand basin, low level w/c, part tiled walls, heated towel rail, side aspect double glazed windows.

First Floor Landing

Bedroom One



Front aspect double glazed window, power point, radiator.

Bedroom Two



Rear aspect double glazed window, radiator, built-in cupboard.

Outside

Rear Garden



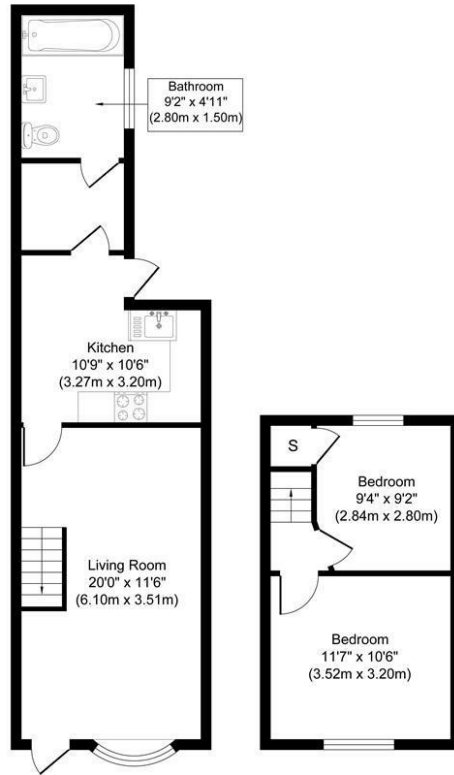
Paved patio area, brick built barbeque, paved pathway with decking area.

Front

Laid to lawn,.



Bath Road, Hounslow TW3 3BN



Ground Floor
 Approximate Floor Area
 446.03sq. ft
 (41.43 q.m)

First Floor
 Approximate Floor Area
 232.64 sq. ft
 (21.61 sq.m)

Approximate Gross Internal Floor Area 678.67 sq. ft / 63.05 sq. m
Illustration for identification purposes only, measurements are approximate, not to scale.
 produced by jphotographystudio.com



| Energy Efficiency Rating | | Current | Potential |
|---|--|-------------------------|-----------|
| Very energy efficient - lower running costs | | | |
| (92 plus) A | | | |
| (81-91) B | | | |
| (69-80) C | | | |
| (55-68) D | | | |
| (39-54) E | | | |
| (21-38) F | | | |
| (1-20) G | | | |
| Not energy efficient - higher running costs | | | |
| England & Wales | | EU Directive 2002/91/EC | |
| Environmental Impact (CO ₂) Rating | | Current | Potential |
| Very environmentally friendly - lower CO ₂ emissions | | | |
| (92 plus) A | | | |
| (81-91) B | | | |
| (69-80) C | | | |
| (55-68) D | | | |
| (39-54) E | | | |
| (21-38) F | | | |
| (1-20) G | | | |
| Not environmentally friendly - higher CO ₂ emissions | | | |
| England & Wales | | EU Directive 2002/91/EC | |

A partner of
The Guild Of Professional Estate Agents
 with a network of over 700 independent estate agents

Associated Office: 121 Park Lane, Mayfair, London W1K 7AG t 020 7318 7075